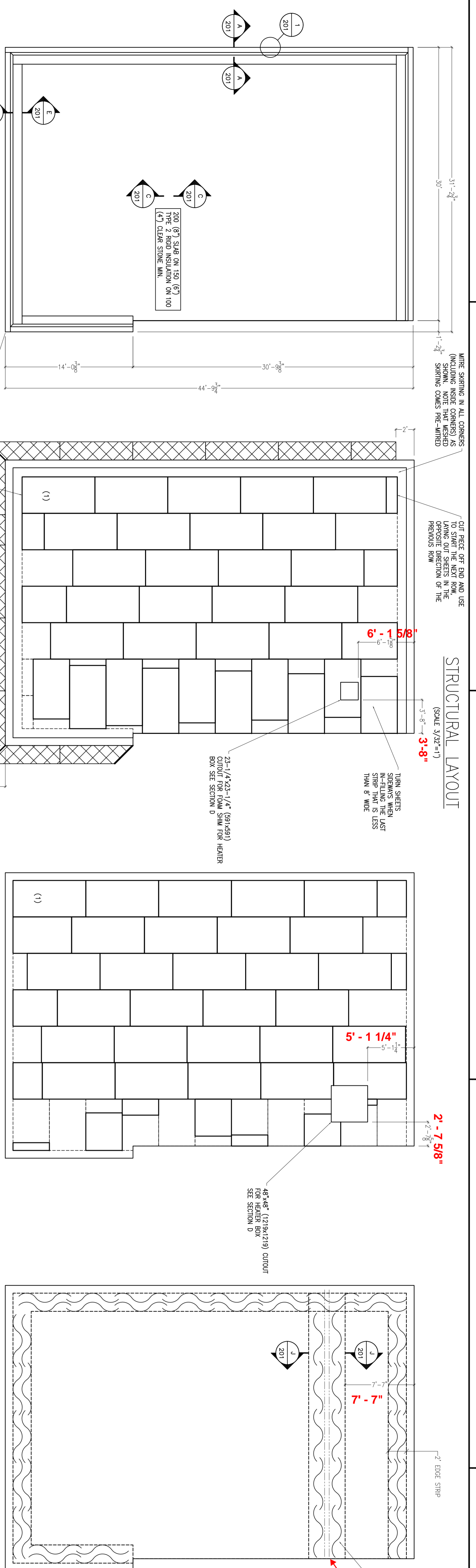


STRUCTURAL LAYOUT

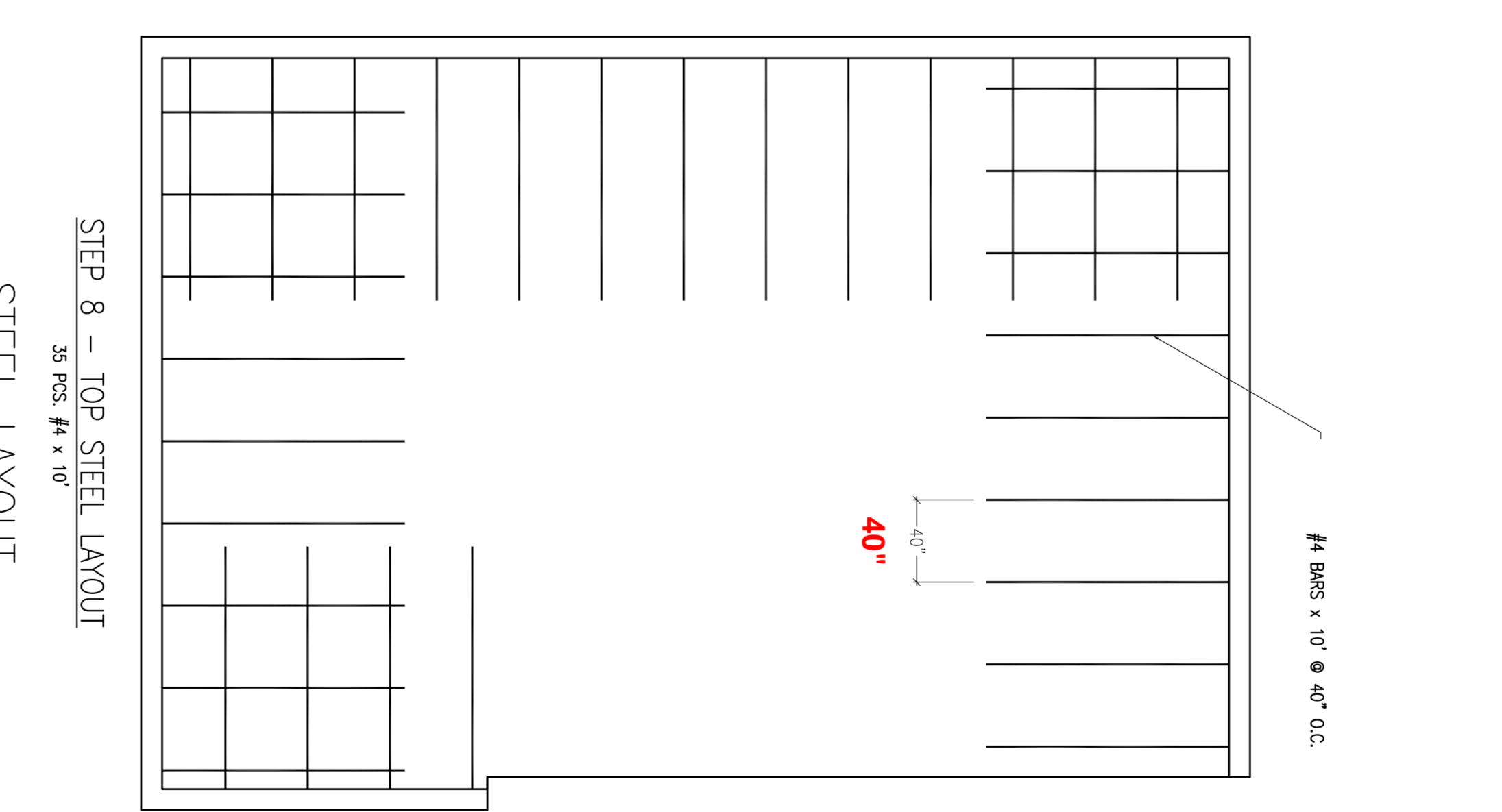
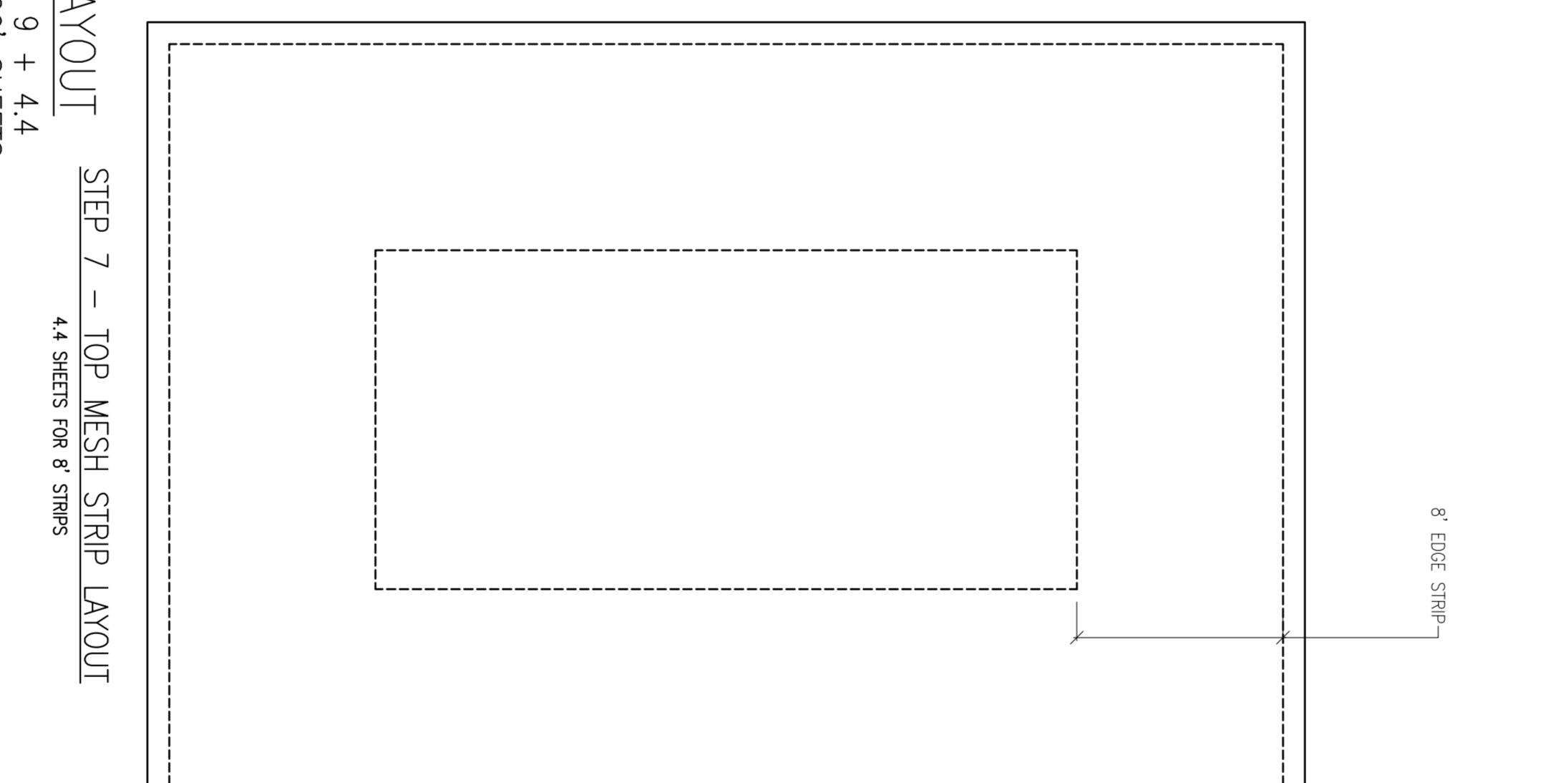
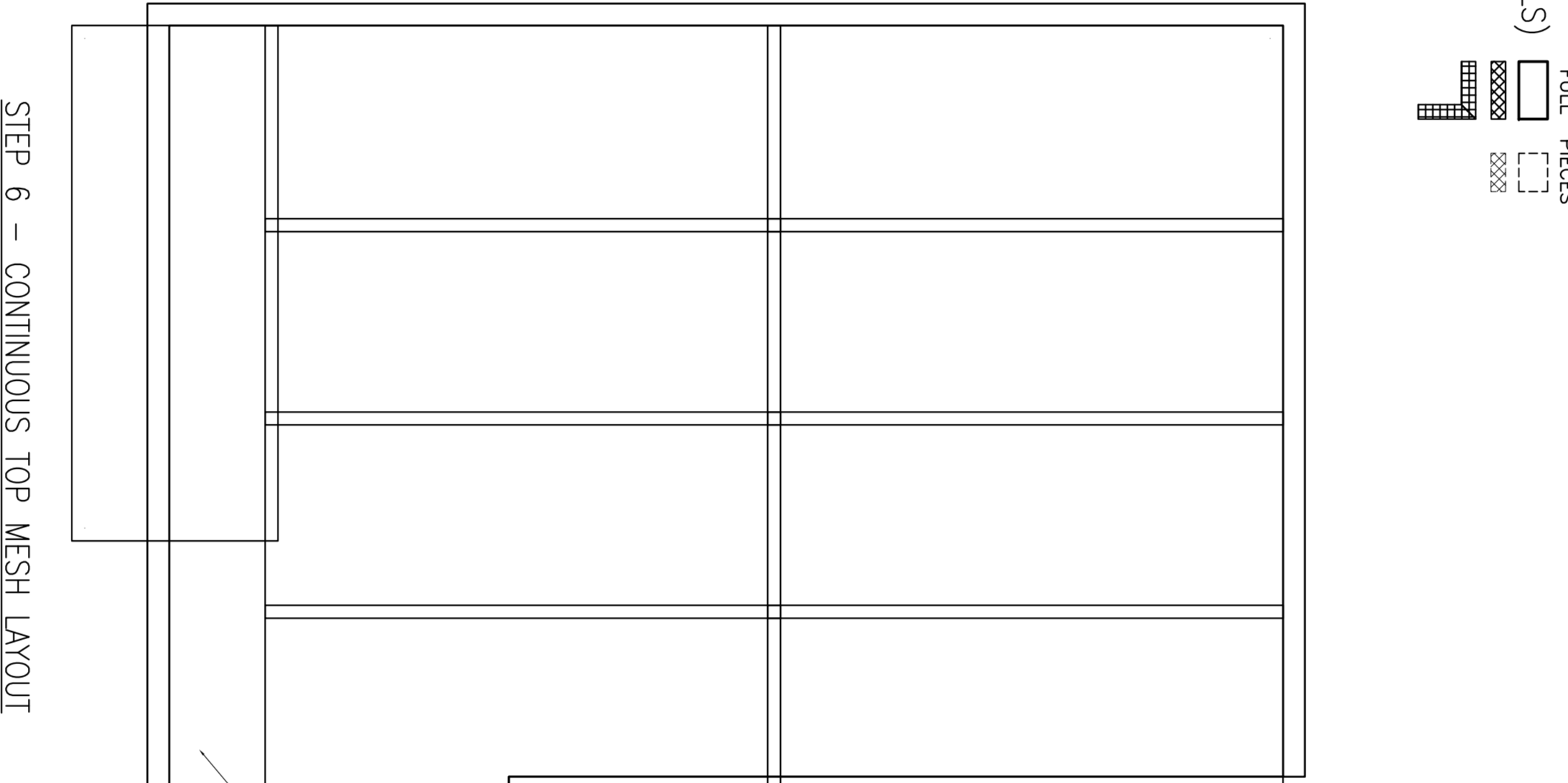
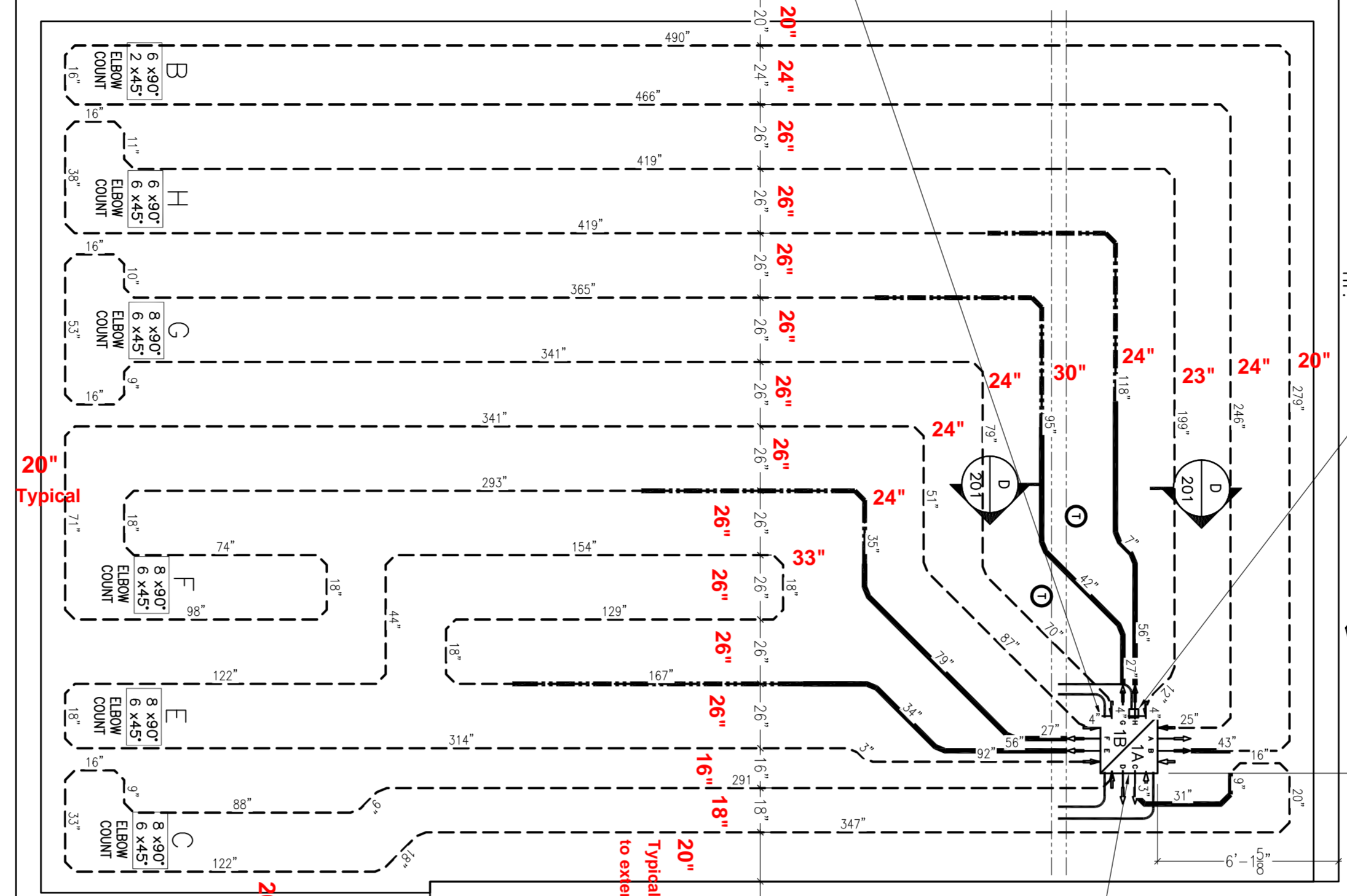


STEP 1 - EDGE ELEMENT LAYOUT

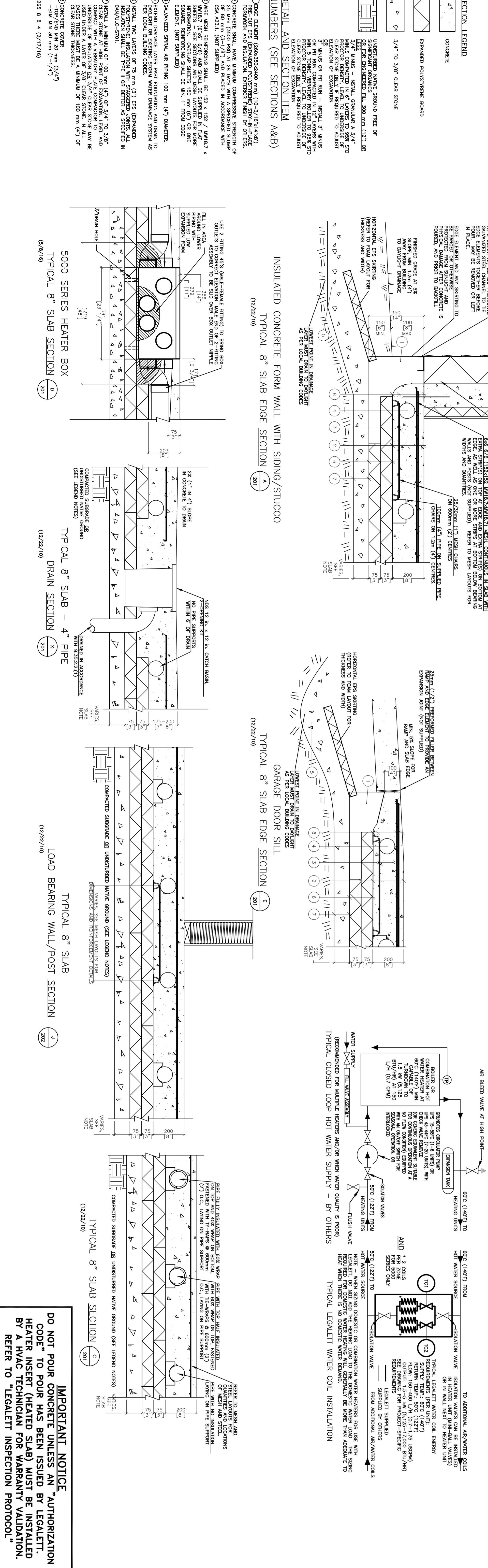
STEP 2 - BOTTOM FOAM LAYOUT

STEP 3 - TOP FOAM LAYOUT

STEP 4 - BOTTOM MESH LAYOUT



STRUCTURAL DETAILS & SECTIONS



8\"/>

#	ITEM	QTY	REMARKS
2343	5000 SERIES FAN ENCLOSURE, 24\"/>		

REINFORCING SCHEDULE/CONCRETE VOLUMES

NO.	DESCRIPTION	QTY	REMARKS
1	CONCRETE	10.000	10.000
2	INSULATION	10.000	10.000
3	STEEL	10.000	10.000

LEGAELETT HEATED GEO-SLAB
 EAST HAMPTON, NY
 NEW HYDE PARK, NY, 11040
 PH: (516) 250-9819

GENERAL NOTES:
 1- ALL DIMENSIONS ARE SHOWN IN MILLIMETERS UNLESS OTHERWISE INDICATED AND SHOWN DIMENSIONS ALWAYS TAKE PRECEDENCE OVER SCALED DIMENSIONS DO NOT SCALE DRAWINGS.
 2- THE INSTALLER/CONTRACTOR/CUSTOMER SHALL VERIFY ALL DIMENSIONS SHOWN ON LEADETT DRAWINGS AND CONTACT LEADETT TO POINT OUT ANY DISCREPANCIES.
 3- THE MINIMUM SPACING BETWEEN HEATED STRIPS SHALL BE 50 MM (2.0\"/>

GENERAL NOTES: STRUCTURAL GEO-SLABS
 1- ALL DIMENSIONS ARE SHOWN IN MILLIMETERS UNLESS OTHERWISE INDICATED AND SHOWN DIMENSIONS ALWAYS TAKE PRECEDENCE OVER SCALED DIMENSIONS DO NOT SCALE DRAWINGS.
 2- THE INSTALLER/CONTRACTOR/CUSTOMER SHALL VERIFY ALL DIMENSIONS SHOWN ON LEADETT DRAWINGS AND CONTACT LEADETT TO POINT OUT ANY DISCREPANCIES.
 3- THE MINIMUM SPACING BETWEEN HEATED STRIPS SHALL BE 50 MM (2.0\"/>

GENERAL NOTES: LEGAELETT HEATED GEO-SLABS
 1- ALL DIMENSIONS ARE SHOWN IN MILLIMETERS UNLESS OTHERWISE INDICATED AND SHOWN DIMENSIONS ALWAYS TAKE PRECEDENCE OVER SCALED DIMENSIONS DO NOT SCALE DRAWINGS.
 2- THE INSTALLER/CONTRACTOR/CUSTOMER SHALL VERIFY ALL DIMENSIONS SHOWN ON LEADETT DRAWINGS AND CONTACT LEADETT TO POINT OUT ANY DISCREPANCIES.
 3- THE MINIMUM SPACING BETWEEN HEATED STRIPS SHALL BE 50 MM (2.0\"/>

IMPORTANT NOTICE
 DO NOT POUR CONCRETE UNLESS AN "AUTHORIZATION CODE" TO POUR HAS BEEN ISSUED BY LEGAELETT. HEATER INSERT (HEATED SLAB) MUST BE INSTALLED BY A HVAC TECHNICIAN FOR WARRANTY VALIDITY. REFER TO LEGAELETT INSPECTION PROTOCOL.

LEGAELETT HSD Inc.

6723 DALNE
 16 SEP 16
 6723